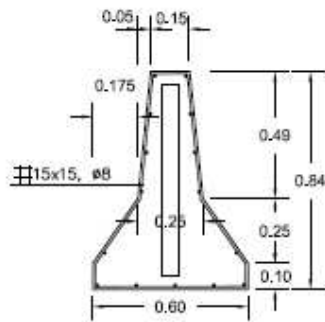
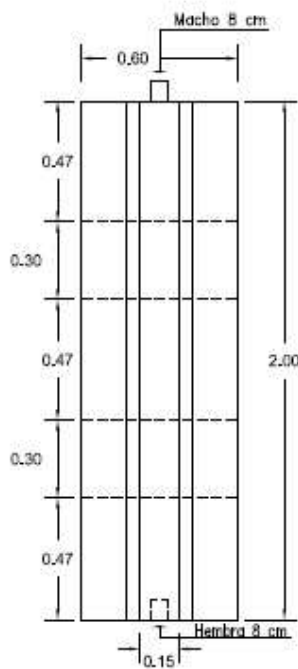


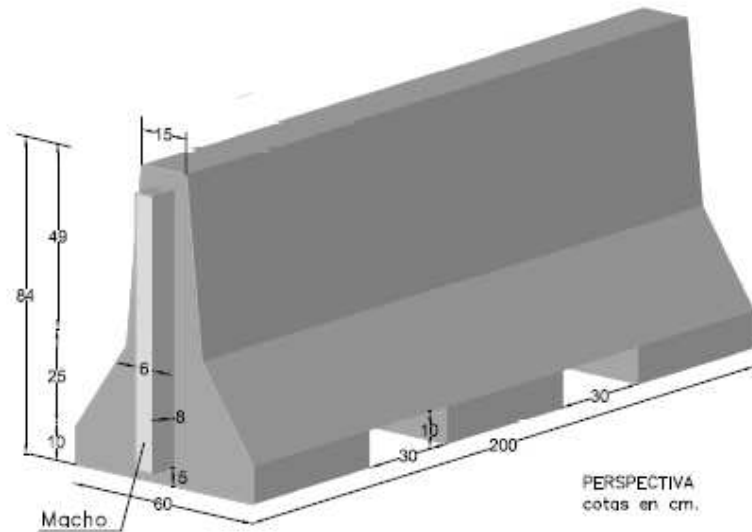
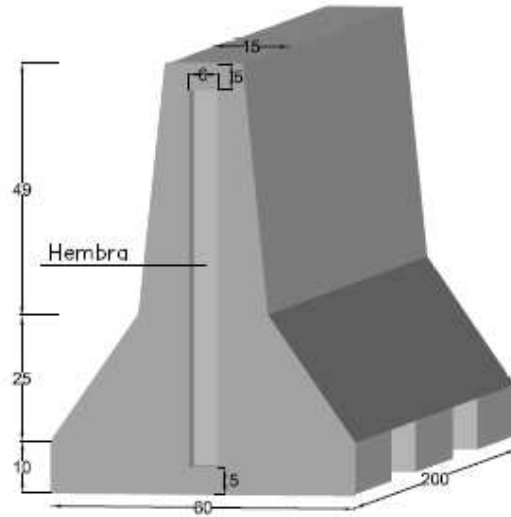
## BARRERA NEW JERSEY A DOS CARAS



VISTA PERFIL



VISTA PLANTA



PERSPECTIVA  
cotas en cm.

ESCALA 1/25 cotas en m.

### CARACTERÍSTICAS TÉCNICAS:

BARRERA NEW JERSEY A DOS CARAS	200 x 84 x 60 x 15
TIPO DE HORMIGÓN	HA-30
TIPO DE CEMENTO	CEM-I-42,5 R FYM
PESO (kg/ metro lineal.)	660 Kg
ARMADURA	#15 X 15, Ø8 mm.